



NEXT GENERATION ELECTRIC MOBILITY

- High Mileage
- Heavy Load Capacity
- Long Battery Life
- Low Running Cost
- Strong Chassis

WWW.HIMTEKNOFORGE.COM



HIM **KAG** AUTO PARTS ALLIED PANTHER
Product of:
HIM TEKNOFORGE LTD.

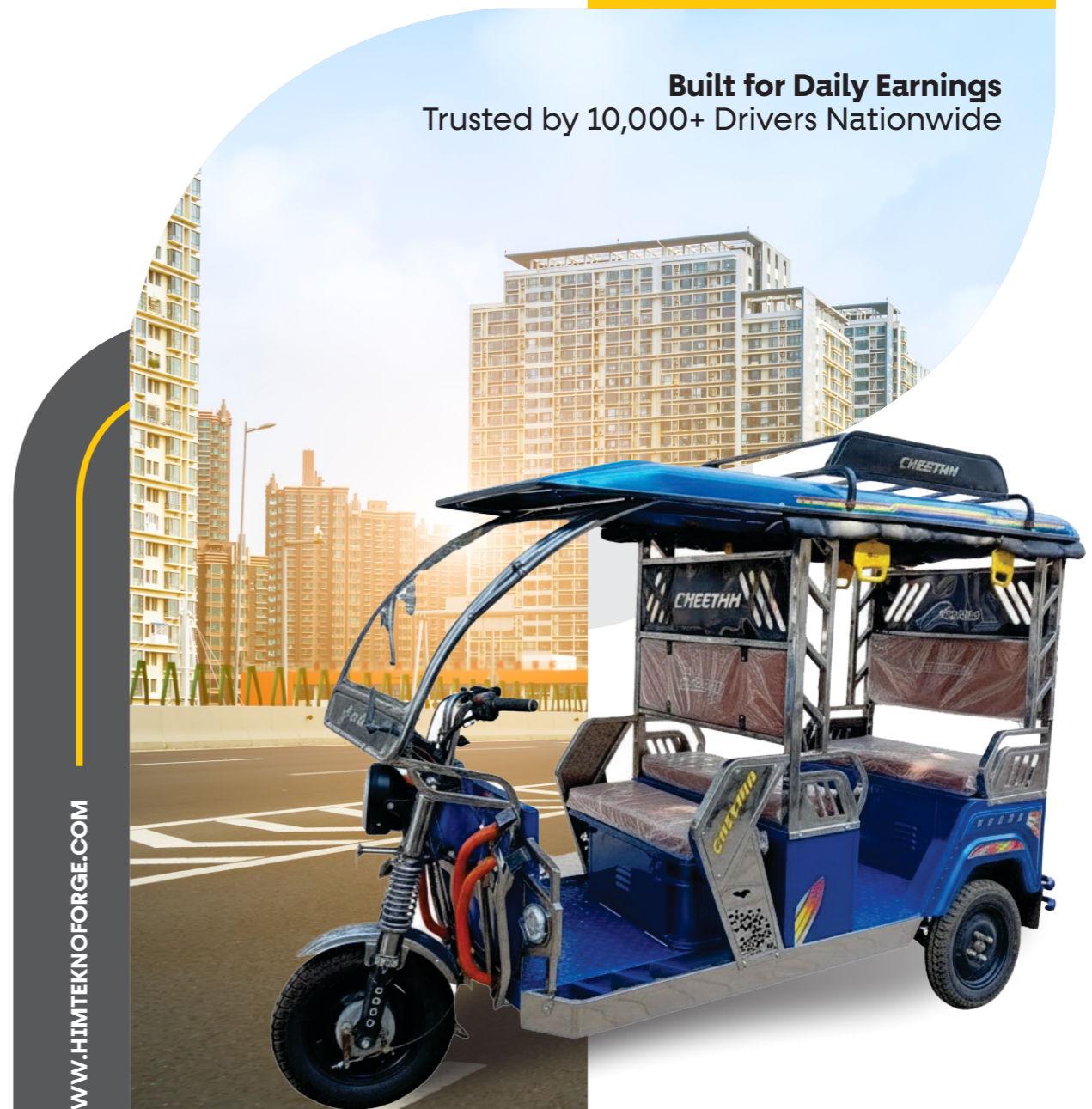
Regd. Office & Work :
Village Billanwali, Baddi-173 205 Distt. Solan (Himachal Pradesh), INDIA
Phone : +91-1795-654025, 654026-27
Fax : +91-1795-245467
Chandigarh Office : SCO 19, First Floor, Sector 7-C,
Madhya Marg , Chandigarh - 160019, INDIA
Phone : +91-172-5016793, 4183065
Fax : +91-172-2651550
E-mail : info@himgroup.net
Website : www.himteknoforge.com



ENGINEERED FOR MILEAGE BUILT FOR PROFIT



Built for Daily Earnings
Trusted by 10,000+ Drivers Nationwide



WWW.HIMTEKNOFORGE.COM

• Smart • Eco • Profitable Ride



HIM TEKNOFORGE ELECTRIC (HTE) is a forward-integrated electric mobility enterprise dedicated to engineering reliable, scalable, and sustainable transportation solutions for the evolving Indian landscape. Built on a bedrock of engineering precision and operational discipline, HTE is committed to accelerating India's transition toward clean energy through a robust, partner-centric growth model.

Our operations encompass the entire electric vehicle (EV) value chain—spanning advanced manufacturing, ecosystem development, and strategic network expansion. This ensures a seamless, integrated approach from product conception to consumer delivery.

HTE's business philosophy is anchored in transparency, enduring strategic partnerships, and value creation for Customers, Channel Partners, and Stakeholders. By synergizing proprietary technology with deep market intelligence, HTE is rapidly establishing a dominant pan-India presence in the high-growth electric vehicle sector.

Engineering The Future Of Electric Mobility



GROUP HERITAGE & INDUSTRIAL STRENGTH

The legacy of the HIM GROUP traces back to 1974, commencing operations in the industrial hub of Nalagarh, Himachal Pradesh. In 1981, HIM TEKNOFORGE LTD was incorporated, evolving into the flagship entity of this multi-faceted industrial conglomerate.

HTE is powerfully backed by the industrial heritage and technical expertise of Him Teknoforge Limited. With over four decades of manufacturing prowess, the group is a distinguished Tier 1 OEM supplier, internationally acclaimed for its world-class forging, precision machining, and rigorous corporate governance.

- **Financial Stability:** Annual group turnover exceeding INR 650 Crores.
- **Manufacturing Footprint:** Multiple state-of-the-art facilities strategically located across Himachal Pradesh, Madhya Pradesh, Gujarat, and Uttarakhand.
- **Sector Diversification:** A premier partner to the automotive, agricultural machinery, construction equipment, and defense sectors, with a significant global export footprint.
- This formidable industrial backing endows HTE with proven engineering processes, supply-chain resilience, and the financial fortitude necessary to ensure long-term stability and stakeholder confidence.

VERTICAL INTEGRATION & MANUFACTURING EXCELLENCE

HTE adheres to a strict 100% In-House Manufacturing Philosophy to maintain absolute stewardship over quality, performance, and vehicle reliability. Our end-to-end production cycle—comprising Design & Validation, procurement of high-grade steel, Chassis Fabrication, Assembly, Painting, and Final PDI—is executed entirely within our proprietary facilities.

Strategic Advantages of Our Vertically Integrated Approach :

- **Rigorous Quality Assurance:** Integrated control protocols at every critical production milestone.
- **Uniform Standards:** Guaranteed durability, safety, and performance consistency across the entire product range.
- **Operational Efficiency:** Optimized cost structures and accelerated go-to-market cycles.
- **Iterative Innovation:** Seamless implementation of product enhancements driven by real-world performance data.
- **Market Reliability:** Delivery of consistent, high-performance vehicles engineered specifically for Indian conditions.

OUR VISION

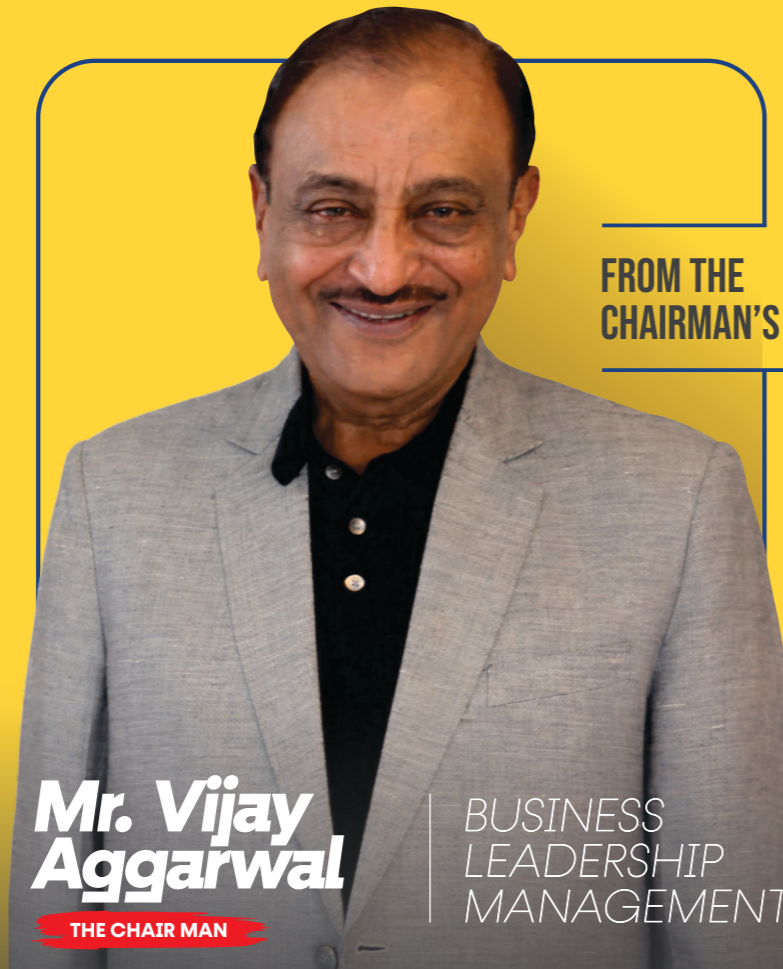
To emerge as the benchmark national electric mobility brand that drives sustainable transportation, empowers entrepreneurs, generates employment, and contributes meaningfully to a Cleaner and Greener India.

Strategic Mission

- **Scale :** To establish a pan-India footprint of 1,000+ operational outlets within a three-year horizon, covering strategic urban and semi-urban markets.
- **Product Excellence :** To engineer and deliver premium electric vehicles optimized for Indian road conditions and commercial viability.
- **Partnership :** To cultivate a sustainable Channel Partner ecosystem that ensures mutual growth and long-term profitability.
- **Sustainability :** To actively advance India's EV adoption and carbon-reduction targets through responsible, tech-driven innovation.
- **Governance :** To uphold the highest standards of ethics, transparency, and customer satisfaction across all business units.

OUR MISSION

To promote green India and add value to the end customer by selling the best Electric Vehicles in the country.



FROM THE
CHAIRMAN'S DESK

**Mr. Vijay
Aggarwal**

THE CHAIRMAN

BUSINESS
LEADERSHIP
MANAGEMENT

Mr. Vijay Aggarwal, is a distinguished Mechanical Engineer and alumnus of REC Warangal (Class of 1970). At 77, he possesses a rare perspective on the evolution of mobility, having witnessed the global transition from animal-drawn transport to the age of aviation. Drawing on this lifetime of observation, he identifies the next great paradigm shift:

"Electric mobility is the cornerstone of future economic progress. Our focus remains on building a robust, future-ready ecosystem founded on trust and engineering excellence."

DIRECTOR'S ENDEAVOUR

Our strategy is defined by disciplined scalability. By synchronizing phased expansion with a robust Channel Partner model, HTE scales responsibly—maintaining centralized control over quality and brand excellence without compromise.

STATEMENT FROM THE CORE PROFESSIONAL TEAM

Execution defines our outcomes. We are committed to creating a resilient ecosystem through continuous improvement, market-driven feedback, and operational excellence.

PRODUCT PORTFOLIO & ROADMAP



REDEFINING THE ROUTE

OUR
PORTFOLIO,
YOUR
FUTURE

HTE follows a disciplined, phased expansion strategy designed to ensure sustainable growth and institutional stability through March 2027.

CURRENT PORTFOLIO

- **L3 Electric Vehicles (Passenger & Loader Segments)**

Engineered for high utilization, maximum durability, and superior cost-efficiency for urban and semi-urban commercial applications.

STRATEGIC EXPANSION (PROJECTED THROUGH MARCH 2027)

- **Electric Two-Wheelers (2W)**

Market entry into personal mobility and high-volume delivery segments.

- **L5 Electric Vehicles**

Introduction of higher payload capacity vehicles for commercial and institutional logistics.

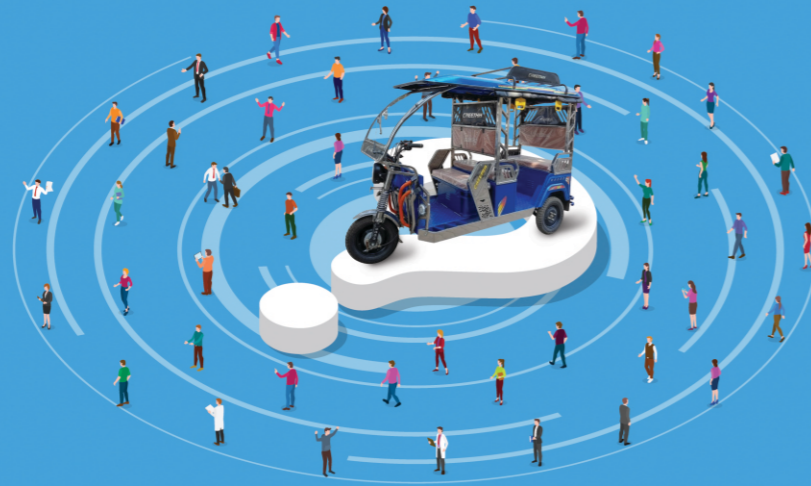
- **EV Infrastructure Development**

Implementation of proprietary charging solutions to strengthen the overall mobility ecosystem.

CONCLUSION

Bolstered by a distinguished industrial heritage and powered by 100% in-house manufacturing capabilities, **HIM TEKNOFORGE ELECTRIC (HTE)** is strategically positioned as a leading force in India's electric mobility revolution. We are building a future that is sustainable, scalable, and defined by engineering trust.

WHY PARTNER WITH "HTE" WHY NOT OTHERS



Why Partner with HTE? In a crowded EV market, HIM TEKNOFORGE ELECTRIC (HTE) offers what others cannot: Legacy, Stability, and Engineering Authority. We are not just assembling parts; we are engineering the future.

The Power of Heritage (Trust Factor)

- Backed by Giants : You are not partnering with a startup. You are backed by the HIM GROUP (Est. 1974), a 650 Cr+ conglomerate and a Tier 1 supplier to global automotive giants.
- Financial Security : Our deep financial reserves ensure we are here for the long haul, protecting your investment against market volatility.

100% In-House Manufacturing (Product Assurance)

- No Dependency : Unlike competitors who rely on imported kits, HTE manufactures chassis, components, and assemblies in-house.
- Spare Parts Availability : Our domestic manufacturing ensures a consistent supply chain for spare parts, eliminating downtime for your customers and protecting your reputation.
- Quality Control : Every vehicle leaving our plant undergoes rigorous Tier 1 automotive-grade testing.

Strategic Product Portfolio (Market Fit)

- Today :
 - High-demand L3 Passenger & Loader vehicles designed for maximum ROI in urban/semi-urban markets.
 - Specially Designed Vehicle for different Industrial Uses.
 - Golf Cart & Off Road Vehicles.
- Tomorrow : A secured roadmap to High-Speed 2-Wheelers and L5 Passenger & Commercial Loaders by 2027, ensuring your dealership grows as the market evolves.
- Planning the Future : JV with MNC for manufacturing allied Electronic & Mechanical Parts for the EV Sector.

The Channel Partner Advantage

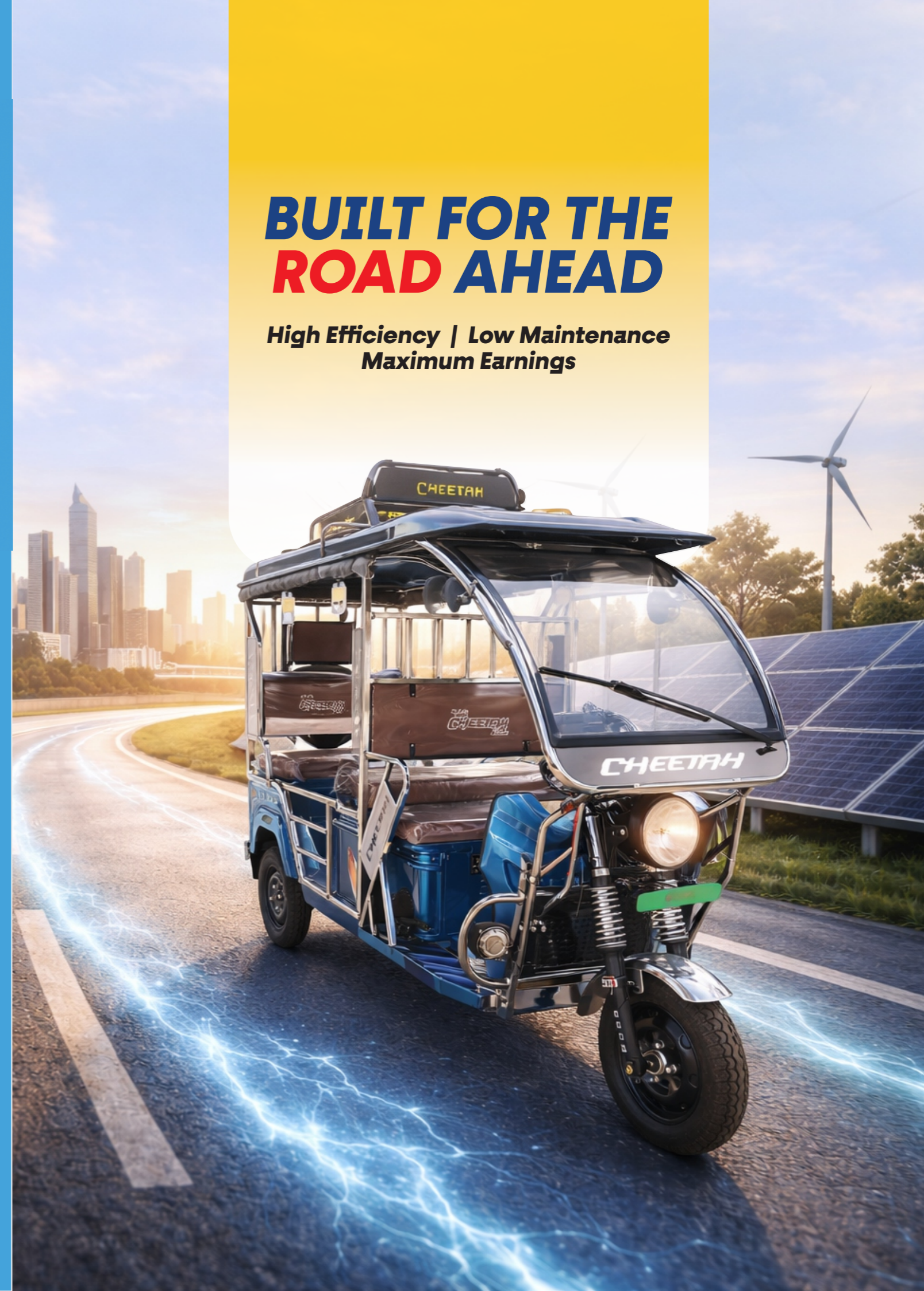
- Territory Protection : We believe in organized growth. We ensure strategic spacing between outlets to maximize your market share.
- Marketing & Branding : National-level brand support combined with localized digital marketing assistance.
- Training Academy : Comprehensive technical and sales training for your staff at our Centre of Excellence.

Strength & A Growth with a Vision

- An existing team of 4000 nos employed with HIM GROUP.
- Young Team of Hard Core Professional.
- Second-Generation : Professionally Mentored, Technically Trained, and Vision-Aligned.
- All round Capabilities to Design, Validate, Manufacture & Succeed.
- HTL has been Built on Trust & is Driven by Engineering with Precision.

BUILT FOR THE ROAD AHEAD

**High Efficiency | Low Maintenance
Maximum Earnings**



**Electrify
Every Mile**

**GLIDE
E-RICKSHAW**



KEY FEATURES

- Steel roof
- Laminated windscreen
- Dynamic roof rack
- LED fog light
- Ladder support
- Unique design

**Engineered For
Reliable
Performance**

CATEGORY	SPECIFICATIONS	DETAILS
Product Name	GLIDE E-Rickshaw	4+1 Seater
Vehicle Classification	Electric Rickshaw	Commercial/Passenger
Seating Capacity	4+1 (Driver)	Maximum comfort
Overall Length	2770 mm	Front to rear measurement
Overall Width	990 mm	Side to side measurement
Overall Height	1770 mm	Floor to roof measurement
Overall Dimensions	2770 x 990 x 1770 mm (L x W x H)	Complete envelope
Weight (With Battery)	360 kg	Total operational mass
Weight (Without Battery)	235 kg	Body only mass
Chassis Material	CBC Steel	High-strength steel construction
Bull Guard	Heavy Duty Bull Guard	Protects driver from front impact
Design Feature	Unique and Trendy Design	Modern & attractive appearance
Roof Rack Design	Dynamic Roof Rack	Load carrying capability
MECHANICAL SPECIFICATIONS		
Tyre Size	3.75x12 (69-b)	BIS Certified - Safety approved
Rim	3.75x12 Special Steel	Heavy-duty construction
Brake System	Mechanical Drum Brake	Front & Rear dual braking
Front Suspension	Telescopic Hydraulic Shocker with Spring	29" bore, 43mm rod (Advanced)
Rear Suspension	Leaf Spring + Rear Shocker 10"	Smooth ride quality
Dual Suspension System	Hydraulic Shocker Technology	Enhanced comfort & stability
Transmission Mode	Transaxle	Smooth power delivery
Parking Brake	Yes	Safety feature
LED Fog Light	Equipped	Enhanced visibility & safety
Windscreen	Laminated Glass Screen	Safety feature
ELECTRONIC SPECIFICATIONS		
Motor Type	BLDC	Brushless DC Motor
Motor Power Output	1200 W	Total system power
Controller	55A, 24 Tube	Advanced motor control system
Charger	48V, 15A	Fast charging capability
Battery (Lead Acid)	48/60 Volt (110/120/135/140/150 Ah)	Premium quality battery
Battery (Lithium ion)	51.2/61 Volt (105/120/132 Ah)	Approved by Testing Govt. Agencies
Maximum Speed	25 km/hr	Government certified speed limit
Digital Speedometer	Digital Calibrated	As per Government standard
Range Per Charge	100-130 km	Typical driving range
WARRANTY & COVERAGE		
Battery	As per manufacture warranty	No warranty without battery cards
Motor & Controller	12 Months	If manufacturing defect
Charger	12 Months	If manufacturing defect
Chassis	1 Year	Full coverage
FREE ACCESSORIES Included Items	Tool Kit, First Aid, Manual, Do's & Don'ts, Fire Extinguisher, Curtain	Complete package

Drive the Future

GRAND E-RICKSHAW



KEY FEATURES

- Steel roof
- Laminated windscreen
- Dynamic roof rack
- LED fog light
- Ladder support
- Unique design

Smart Engineering
Seamless Mobility

CATEGORY	SPECIFICATIONS	DETAILS
Product Name	GRAND E-Rickshaw	4+1 Seater
Vehicle Classification	Electric Rickshaw	Commercial/Passenger
Seating Capacity	4+1 (Driver)	Maximum comfort
Overall Length	2770 mm	Front to rear measurement
Overall Width	990 mm	Side to side measurement
Overall Height	1770 mm	Floor to roof measurement
Overall Dimensions	2770 x 990 x 1770 mm (L x W x H)	Complete envelope
Weight (With Battery)	360 kg	Total operational mass
Weight (Without Battery)	235 kg	Body only mass
Chassis Material	CBC Steel	High-strength steel construction
Bull Guard	Heavy Duty Bull Guard	Protects driver from front impact
Design Feature	Unique and Trendy Design	Modern & attractive appearance
Roof Rack Design	Dynamic Roof Rack	Load carrying capability
MECHANICAL SPECIFICATIONS		
Tyre Size	3.75x12 (69-b)	BIS Certified - Safety approved
Rim	3.75x12 Special Steel	Heavy-duty construction
Brake System	Mechanical Drum Brake	Front & Rear dual braking
Front Suspension	Telescopic Hydraulic Shocker with Spring	29" bore, 43mm rod (Advanced)
Rear Suspension	Leaf Spring + Rear Shocker 10"	Smooth ride quality
Dual Suspension System	Hydraulic Shocker Technology	Enhanced comfort & stability
Transmission Mode	Transaxle	Smooth power delivery
Parking Brake	Yes	Safety feature
LED Fog Light	Equipped	Enhanced visibility & safety
Windscreen	Laminated Glass Screen	Safety feature
ELECTRONIC SPECIFICATIONS		
Motor Type	BLDC	Brushless DC Motor
Motor Power Output	1200 W	Total system power
Controller	55A, 24 Tube	Advanced motor control system
Charger	48V, 15A	Fast charging capability
Battery (Lead Acid)	48/60 Volt (110/120/135/140/150 Ah)	Premium quality battery
Battery (Lithium ion)	51.2/61 Volt (105/120/132 Ah)	Approved by Testing Govt. Agencies
Maximum Speed	25 km/hr	Government certified speed limit
Digital Speedometer	Digital Calibrated	As per Government standard
Range Per Charge	100-130 km	Typical driving range
WARRANTY & COVERAGE		
Battery	As per manufacture warranty	No warranty without battery cards
Motor & Controller	12 Months	If manufacturing defect
Charger	12 Months	If manufacturing defect
Chassis	1 Year	Full coverage
FREE ACCESSORIES Included Items	Tool Kit, First Aid, Manual, Do's & Don'ts, Fire Extinguisher, Curtain	Complete package

Future on Wheels

CLASSIC E-RICKSHAW



KEY FEATURES

- Steel roof
- Laminated windscreen
- Dynamic roof rack
- LED fog light
- Ladder support
- Unique design

Comfort in Motion **Power in Every Ride**

CATEGORY	SPECIFICATIONS	DETAILS
Product Name	CLASSIC E-Rickshaw	4+1 Seater
Vehicle Classification	Electric Rickshaw	Commercial/Passenger
Seating Capacity	4+1 (Driver)	Maximum comfort
Overall Length	2770 mm	Front to rear measurement
Overall Width	990 mm	Side to side measurement
Overall Height	1770 mm	Floor to roof measurement
Overall Dimensions	2770 x 990 x 1770 mm (L x W x H)	Complete envelope
Weight (With Battery)	360 kg	Total operational mass
Weight (Without Battery)	235 kg	Body only mass
Chassis Material	CBC Steel	High-strength steel construction
Bull Guard	Heavy Duty Bull Guard	Protects driver from front impact
Design Feature	Unique and Trendy Design	Modern & attractive appearance
Roof Rack Design	Dynamic Roof Rack	Load carrying capability
MECHANICAL SPECIFICATIONS		
Tyre Size	3.75x12 (69-PR)	BIS Certified - Safety approved
Rim	3.75x12 Special Steel	Heavy-duty construction
Brake System	Mechanical Drum Brake	Front & Rear dual braking
Front Suspension	Telescopic Hydraulic Shocker with Spring	29" bore, 43mm rod (Advanced)
Rear Suspension	Leaf Spring + Rear Shocker 10"	Smooth ride quality
Dual Suspension System	Hydraulic Shocker Technology	Enhanced comfort & stability
Transmission Mode	Transaxle	Smooth power delivery
Parking Brake	Yes	Safety feature
LED Fog Light	Equipped	Enhanced visibility & safety
Windscreen	Laminated Glass Screen	Safety feature
ELECTRONIC SPECIFICATIONS		
Motor Type	BLDC	Brushless DC Motor
Motor Power Output	1200 W	Total system power
Controller	55A, 24 Tube	Advanced motor control system
Charger	48V, 15A	Fast charging capability
Battery (Lead Acid)	48/60 Volt (110/120/135/140/150 Ah)	Premium quality battery
Battery (Lithium ion)	51.2/61 Volt (105/120/132 Ah)	Approved by Testing Govt. Agencies
Maximum Speed	25 km/hr	Government certified speed limit
Digital Speedometer	Digital Calibrated	As per Government standard
Range Per Charge	100-130 km	Typical driving range
WARRANTY & COVERAGE		
Battery	As per manufacture warranty	No warranty without battery cards
Motor & Controller	12 Months	If manufacturing defect
Charger	12 Months	If manufacturing defect
Chassis	1 Year	Full coverage
FREE ACCESSORIES Included Items	Tool Kit, First Aid, Manual, Do's & Don'ts, Fire Extinguisher, Curtain	Complete package

Ride the Change

PREMIUM E-RICKSHAW



KEY FEATURES

- Steel roof
- Laminated windscreen
- Dynamic roof rack
- LED fog light
- Ladder support
- Unique design

Next-Gen Electric Mobility

CATEGORY	SPECIFICATIONS	DETAILS
Product Name	PREMIUM E-Rickshaw	4+1 Seater
Vehicle Classification	Electric Rickshaw	Commercial/Passenger
Seating Capacity	4+1 (Driver)	Maximum comfort
Overall Length	2770 mm	Front to rear measurement
Overall Width	990 mm	Side to side measurement
Overall Height	1770 mm	Floor to roof measurement
Overall Dimensions	2770 x 990 x 1770 mm (L x W x H)	Complete envelope
Weight (With Battery)	360 kg	Total operational mass
Weight (Without Battery)	235 kg	Body only mass
Chassis Material	CBC Steel	High-strength steel construction
Bull Guard	Heavy Duty Bull Guard	Protects driver from front impact
Design Feature	Unique and Trendy Design	Modern & attractive appearance
Roof Rack Design	Dynamic Roof Rack	Load carrying capability
MECHANICAL SPECIFICATIONS		
Tyre Size	3.75x12 (69-b)	BIS Certified - Safety approved
Rim	3.75x12 Special Steel	Heavy-duty construction
Brake System	Mechanical Drum Brake	Front & Rear dual braking
Front Suspension	Telescopic Hydraulic Shocker with Spring	29" bore, 43mm rod (Advanced)
Rear Suspension	Leaf Spring + Rear Shocker 10"	Smooth ride quality
Dual Suspension System	Hydraulic Shocker Technology	Enhanced comfort & stability
Transmission Mode	Transaxle	Smooth power delivery
Parking Brake	Yes	Safety feature
LED Fog Light	Equipped	Enhanced visibility & safety
Windscreen	Laminated Glass Screen	Safety feature
ELECTRONIC SPECIFICATIONS		
Motor Type	BLDC	Brushless DC Motor
Motor Power Output	1200 W	Total system power
Controller	55A, 24 Tube	Advanced motor control system
Charger	48V, 15A	Fast charging capability
Battery (Lead Acid)	48/60 Volt (110/120/135/140/150 Ah)	Premium quality battery
Battery (Lithium ion)	51.2/61 Volt (105/120/132 Ah)	Approved by Testing Govt. Agencies
Maximum Speed	25 km/hr	Government certified speed limit
Digital Speedometer	Digital Calibrated	As per Government standard
Range Per Charge	100-130 km	Typical driving range
WARRANTY & COVERAGE		
Battery	As per manufacture warranty	No warranty without battery cards
Motor & Controller	12 Months	If manufacturing defect
Charger	12 Months	If manufacturing defect
Chassis	1 Year	Full coverage
FREE ACCESSORIES Included Items	Tool Kit, First Aid, Manual, Do's & Don'ts, Fire Extinguisher, Curtain	Complete package

Zyada Load Zero Tension

E-CART LOADER



KEY FEATURES

- Steel roof
- Laminated windscreen
- Dynamic roof rack
- LED fog light
- Ladder support
- Unique design

Built for Load
Designed for
Profit

CATEGORY	SPECIFICATIONS	DETAILS
Product Name	E-CART	Cargo
Vehicle Classification	Electric CART	Commercial
Seating Capacity	1	Maximum comfort
Overall Length	2475 mm	Front to rear measurement
Overall Width	975 mm	Side to side measurement
Overall Height	1780 mm	Floor to roof measurement
Overall Dimensions	2745 x 975 x 1780 mm (L x W x H)	Complete envelope
Weight (With Battery)	360 kg	Total operational mass
Weight (Without Battery)	235 kg	Body only mass
Chassis Material	CBC Steel	High-strength steel construction
Bull Guard	Heavy Duty Bull Guard	Protects driver from front impact
Design Feature	Unique and Trendy Design	Modern & attractive appearance
Roof Rack Design	Dynamic Roof Rack	Load carrying capability
MECHANICAL SPECIFICATIONS		
Tyre Size	3.75x12 (69-b)	BIS Certified - Safety approved
Rim	3.75x12 Special Steel	Heavy-duty construction
Brake System	Mechanical Drum Brake	Front & Rear dual braking
Front Suspension	Telescopic Hydraulic Shocker with Spring	29" bore, 43mm rod (Advanced)
Rear Suspension	Leaf Spring + Rear Shocker 10"	Smooth ride quality
Dual Suspension System	Hydraulic Shocker Technology	Enhanced comfort & stability
Transmission Mode	Transaxle	Smooth power delivery
Parking Brake	Yes	Safety feature
LED Fog Light	Equipped	Enhanced visibility & safety
Windscreen	Laminated Glass Screen	Safety feature
ELECTRONIC SPECIFICATIONS		
Motor Type	BLDC	Brushless DC Motor
Motor Power Output	1500 W	Total system power
Controller	55A, 24 Tube	Advanced motor control system
Charger	48V, 15A	Fast charging capability
Battery (Lead Acid)	48/60 Volt (110/120/135/140/150 Ah)	Premium quality battery
Battery (Lithium ion)	51.2/61 Volt (105/120/132 Ah)	Approved by Testing Govt. Agencies
Maximum Speed	25 km/hr	Government certified speed limit
Digital Speedometer	Digital Calibrated	As per Government standard
Range Per Charge	100-130 km	Typical driving range
WARRANTY & COVERAGE		
Battery	As per manufacture warranty	No warranty without battery cards
Motor & Controller	12 Months	If manufacturing defect
Charger	12 Months	If manufacturing defect
Chassis	1 Year	Full coverage
FREE ACCESSORIES Included Items	Tool Kit, First Aid, Manual, Do's & Don'ts, Fire Extinguisher	Complete package

**Drive Clean
Keep Green**

E-CART GARBAGE



CATEGORY	SPECIFICATIONS	DETAILS
Generic Parameters	Vehicle Category	E - cart (Garbage)
	Used for	Garbage Collection & Dispose
	Type of Body / Container	E-Cart With Twin Bin Type
	Tipping	Automatic/Manual Hydraulic System
	Body /Container Volume (cubic metres)	0.5 Cubic meter
	Body /Container Material	Mild Steel as per IS 2062
	Body /Container Plate Thickness (mm)	1.6 millimeter
	Power Source	Electric-Battery Operated
	Maximum Power Output (kw)	1200 WATT to 1500 WATT
	Type of Traction Battery	Lead Acid / Li-Ion (As per requirement)
	Traction Battery Capacity (in AH)	100Ah to 150Ah (As per requirement)
	Motor & Controller voltage (Watt)	1200 WATT TO 1500 WATT
	Type of Motor	BLDC
	Operating Voltage of Vehicle (in Volts)	48 V / 60 V (As per requirement)
	Seating Capacity (Including Driver)	1
	Maximum Speed of the Vehicle (km/h)	25
	Type of Front Tyre	Tube -type
	Type of Rear Tyre & Stepney	Tube -type
	Front Tyre Designation as per IS 15627 (Latest Version)	3.75-12
	Rear Tyre Designation as per IS 15627 (Latest Version)	3.75-12
Type of Front Brake	Drum Brake	
Type of Rear Brake	Drum Brake	
km Range as per AIS 040	80 kilometer	
Windshield	Integrated wind shield with wiper motor(Auto Fascia)as per AIS 045	
Dimensions	Additional Accessories	Fire Extinguisher
	Overall Length of Vehicle (mm)	2800 millimeter
	Overall Width of Vehicle (mm)	1000 millimeter
	Overall Height of Vehicle (mm)	1800 millimeter
	Ground Clearance (mm)	180 millimeter
	Wheel Base (mm)	2100 millimeter
	Gradeability (Degree)	7 degree
	Maximum Gross Vehicle Weight (Kg)	726 kilogram
Certifications & Warranty	Load Carrying capacity (Payload) (kg)	310 kilogram
	Certification Type	Complete Vehicle Certification
	Certifying Agency	ICAT
	Agreed to furnish all the test reports and certificates to buyer / consignee on demand	Yes
	Standard Vehicle Warranty (minimum)	1 Year
	Battery Warranty (minimum)	Lead Acid-1 Year Li-Ion - 3 Years

COMING SOON MODELS

Redefining Urban Electric Mobility



SOMETHING
BIG IS
COMING

Advanced Technology
Modern Design
Superior Comfort

Launching Soon | Stay Tuned